

Cyrus CDt-XR

High-End CD transport with PSU-XR upgrade port

Product Information

The CDt-XR is one of the first wave of products, heralding the new XR series of Cyrus components. The familiar Cyrus precision die-cast case is the same, but everything else has changed. With ground-up engineering inside, an all-new phantom black paint finish, touch sensitive controls and a higher resolution display that is customisable for brightness, contrast and polarity, the high quality finish of XR makes a strong statement.

There's no shortage of innovations and upgrades under the skin. XR series products are the manifestation of over a decade's accumulated technology and development knowledge. With particular attention to the detail of every component that lays in the audio path, XR takes Cyrus audio performance to another level.

Cyrus CDt-XR features and benefits

Servo Evolution

The Cyrus philosophy for reading CD has always been the same - read it once and read it accurately. The latest iteration of Cyrus SE technology in the CDt-XR does exactly this, streaming the data from the disc to the audio processing circuitry with precision and accuracy.

Pure Transport

With no built-in DAC, nor the requirement to drive it, the CDt-XR works purely as a digital transport. The absence of any DAC or analogue circuitry allows design of the CDt-XR to be focussed purely on data retrieval, state-of-the-art reclocking and a high performance digital output.

Connectivity

The CDt-XR includes both optical and SPDIF coaxial digital outputs fed from a dedicated digital audio output driver.

Power supply design

As with any CD player, the performance of digital CD transports benefits greatly from high quality, stable power supplies. In the case of the CDt-XR, the digital control circuits run from a dedicated, high-efficiency power supply. A high capacity linear supply feeds separately to the SE circuit, the digital master clock, the digital audio output driver, the PLL master clock and the drive motors through independent regulation channels.

PSU-XR port

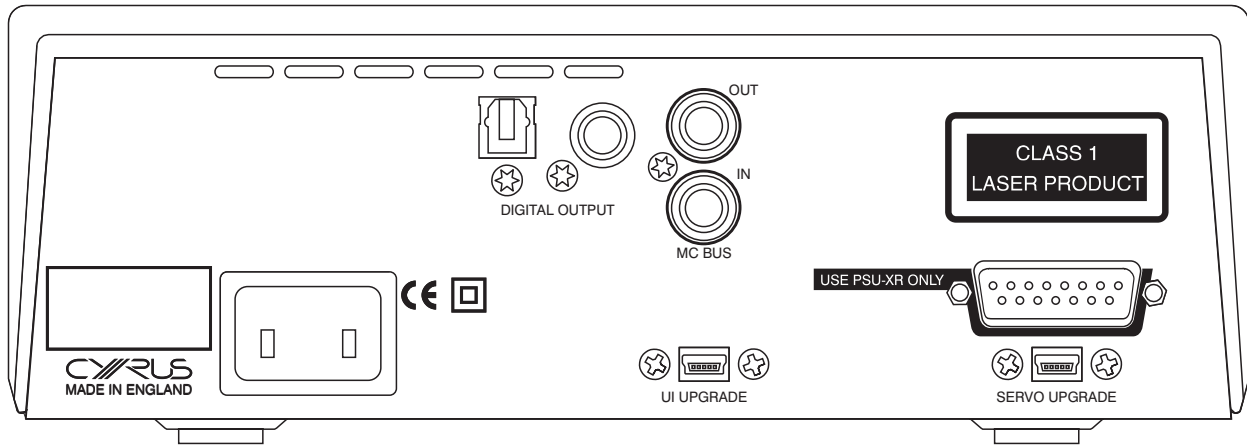
The CDt-XR includes a port for the all-new PSU-XR power supply upgrade. Thirty years ago Cyrus broke new ground with the introduction of the PSX-R, the first ever regulated power supply upgrade that automatically adapted to match perfectly the power requirements of any connected product. The PSU-XR raises the bar by sourcing no less than five independent regulated supplies in a single box. For the CDt-XR the PSU-XR is employed to reduce dynamic loads on the internal power supplies and enable these to run under more stable conditions.

Configurable options menu

A new menu system makes the CDt-XR customisable yet easy to set up. The tree-style navigation structure has display, time-out, and system configuration options. Menu settings are quick and simple to select.



Cyrus audio products are designed, manufactured and supported at our headquarters in Cambridgeshire, England.



All Cyrus components are manufactured in an advanced die-cast aluminium chassis and this hand finished casework is an integral part of the products’ sound. It’s not just about good looks; the chassis composition is specifically designed to create an electronically shielded and mechanically vibration-free environment for the sensitive audio circuits which are hung inside the inverted chassis, avoiding unwanted electric currents and secondary magnetic fields so the sound you hear is the very best that it can be.

Cyrus CDt-XR Specifications

Digital CD transport	EAN 230V version 5060019434242
Servo Evolution technology	EAN 115V version 5060020434334
Optical and coaxial outputs	
PSU-XR upgrade port	
User upgradable firmware	
iR14 Remote control included	
Dimensions (H x W x D) – 73 x 215 x 360 mm 2.87” x 8.46” x 14.17”	
Weight - 3.7kg 8.2lbs	



Cyrus audio products are designed, manufactured and supported at our headquarters in Cambridgeshire, England.