

PSU-XR

When to update?

The PSU-XR features user-upgradable firmware via a port on the back panel.

Owners can check the Cyrus website for notification of updates or register their products to receive notification when updates are released.

COMPUTERS AND OPERATING SYSTEMS

Cyrus firmware upgrades are possible using an Apple Mac computer. No special app is required, just basic file management skills to download, copy and delete files.

IMPORTANT NOTE: The following procedure copies the firmware file using a terminal window. This must be followed for successful firmware updates. Do not use any other copy and paste method as this may risk the placement of additional system files in the memory of the amplifier and prevent firmware installation.

TOOLS REQUIRED

The PSU-XR will not require dismantling.

A mini USB cable (supplied) and the upgrade firmware will also be required.

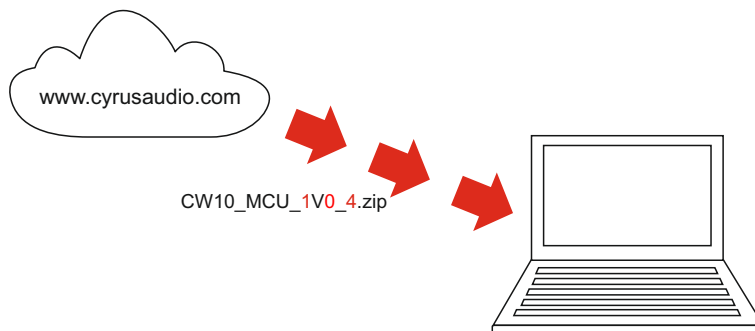
NOTE: Not all mini USB cables are data cables, some are charging cables. A charging cable is not suitable for firmware upgrades. Always use the cable supplied with the amplifier where possible.

DOWNLOAD

Download the firmware you require from the Cyrus website at www.cyrusaudio.com.

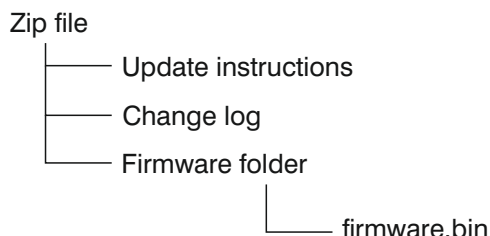
The firmware file name will be contained in a zip file in the format 'CW10_MCU_1v0_4.zip' where the red numbers in the example will change to indicate the firmware version. This 1v4_8 firmware version will be used through the rest of this example instruction sequence.

File name formats may change from time to time, but PSU-XR firmware will always be prefixed 'CW10' and will clearly include the version number.



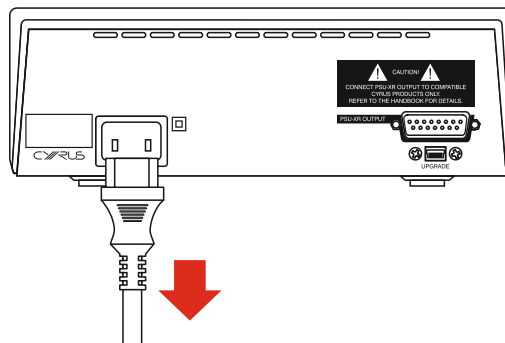
LOCATION OF FIRMWARE

- The firmware update file is packaged with these instructions in the 'zip' file download.



DISCONNECT

Disconnect mains power from the PSU-XR.

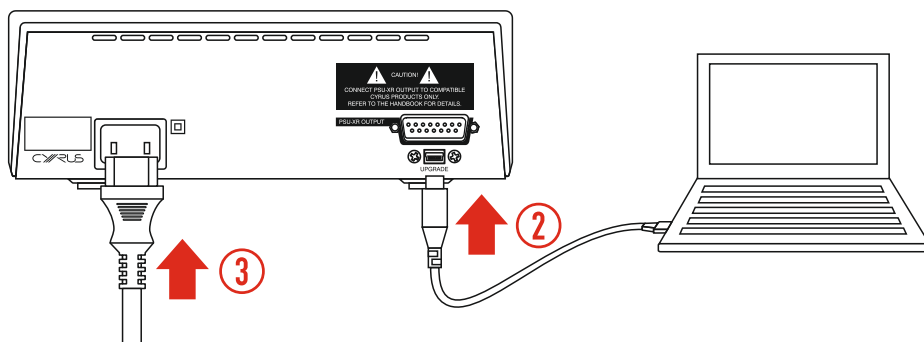


CONNECT

1. Connect the update cable to the computer.
2. Connect the mini-USB cable to the UPGRADE port on the back of the amplifier.

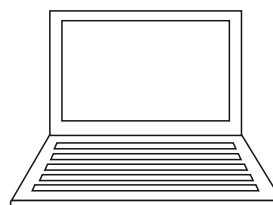
3. Connect mains power.

The PSU-XR is now ready to update.



UPGRADE

Follow the instructions on the next page to update the firmware.



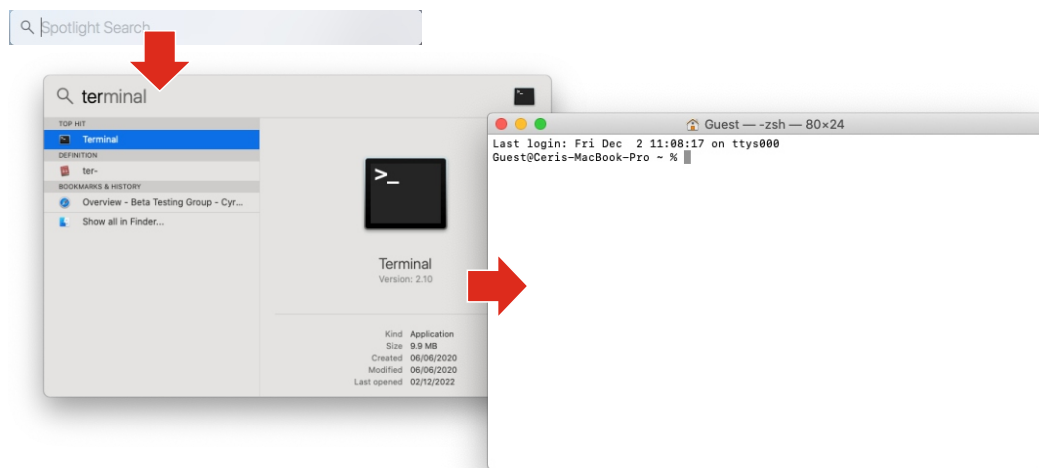
LOCATE CURRENT FIRMWARE

- Press $\text{⌘} + \text{Shift} + \text{C}$ to display locations on the computer.
- From the Finder window you opened
- Select the CRP DISABLD folder.
The file displayed is the current firmware.



LAUNCH TERMINAL

- Press $\text{⌘} + \text{Space}$ to open a search window.
 - Search for 'Terminal'.
 - Select this option.
- A terminal window will open.*

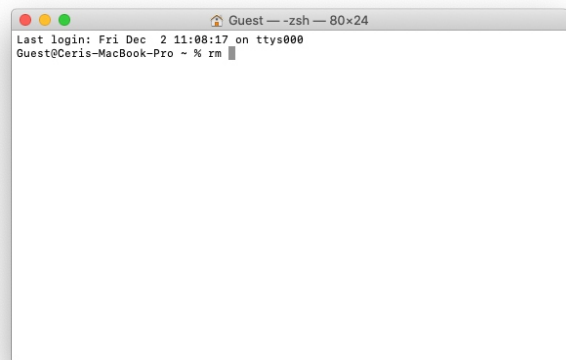


DELETE ORIGINAL

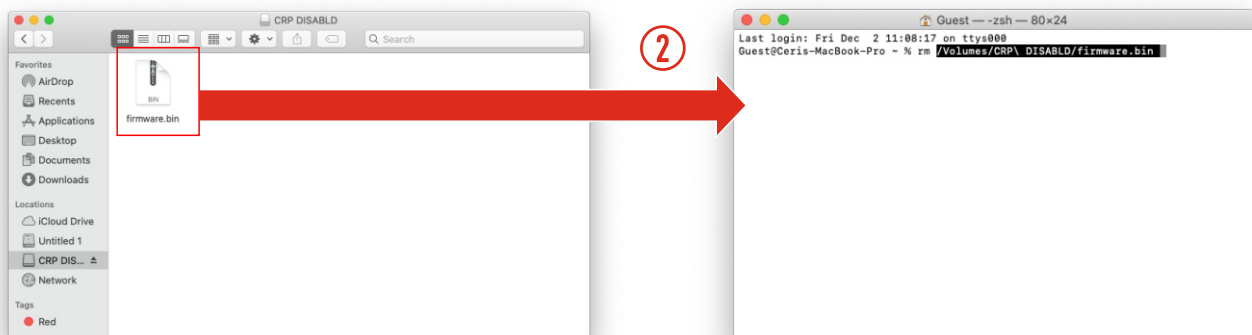
Delete the original firmware file from the PSU-XR.

- Type 'rm'
- Type a space.
- Drag the firmware.bin file from this drive in the finder window into the terminal window.
- Press ' \leftarrow '

①



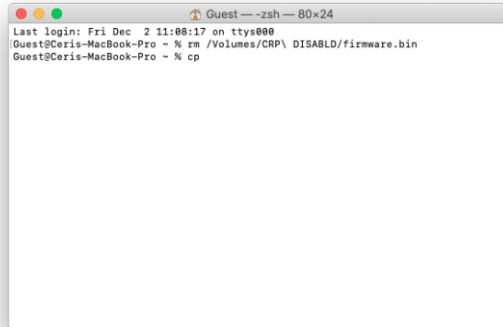
②



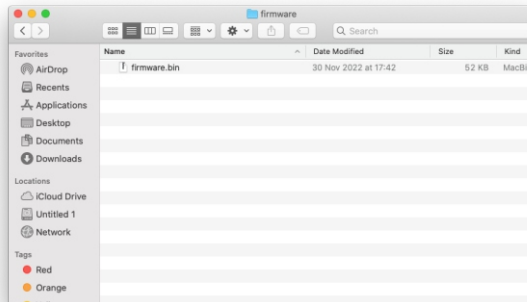
UPDATE

- In the Terminal window, type 'cp'.
- Type a space.

NOTE: Don't press ENTER!



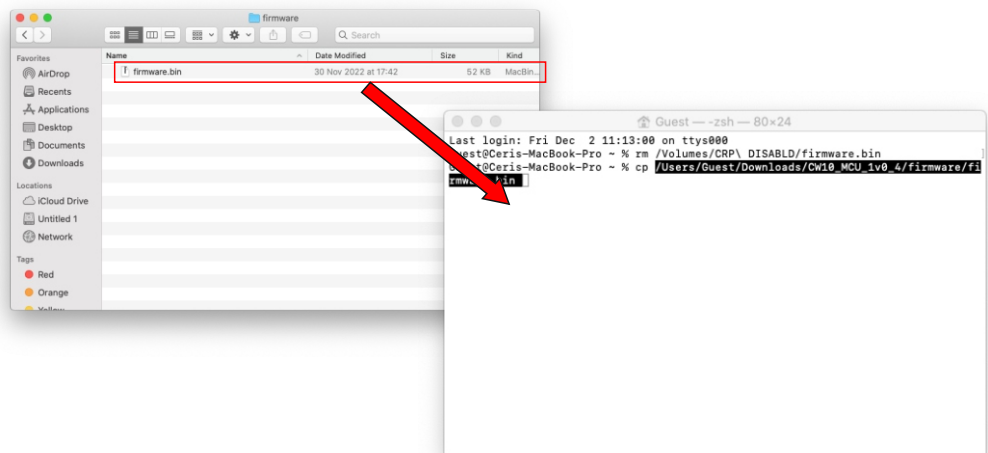
- From the Finder window.
- Select the Downloads folder.
- Navigate into the 'Firmware' folder within the download package.



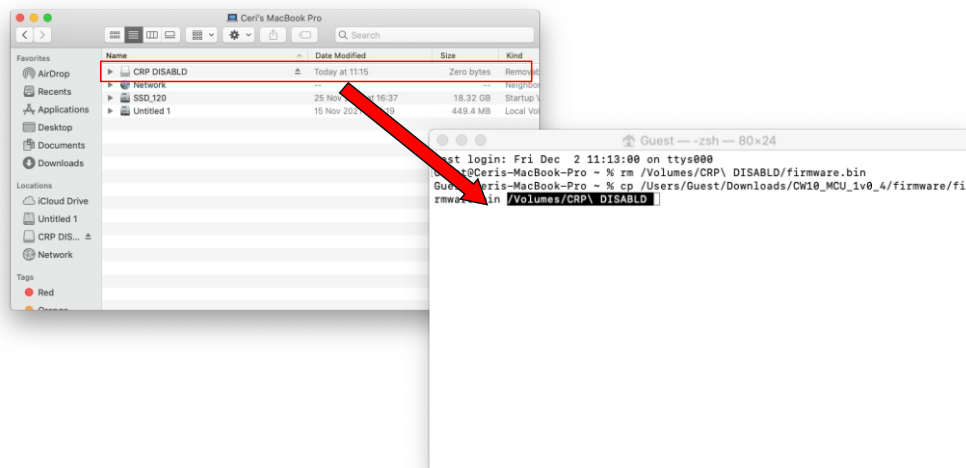
Drag firmware.bin from the Finder window into the Terminal window.

- Check there's a space at the end of the line. If not, type one.

NOTE: Don't press ENTER!

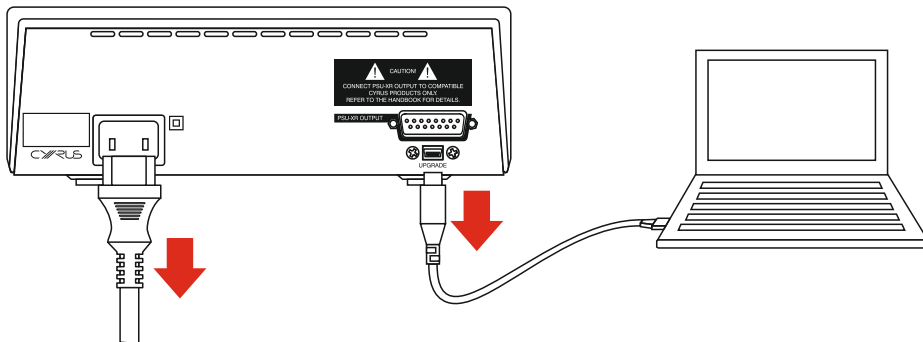


- Press ⌘+Shift+C to display locations on the computer.
- From this screen, drag the CRP DISABLD volume into terminal.
- From the terminal window, press ↵.
- The firmware will be updated.



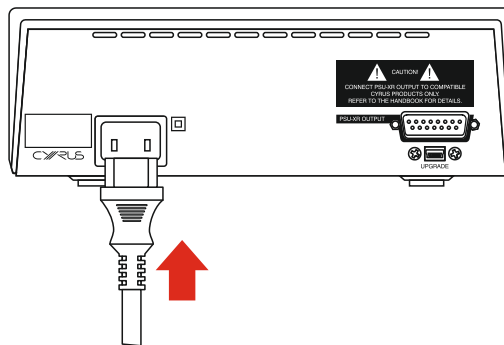
DISCONNECT

- Disconnect mains power.
- Disconnect the update cable.



CONNECT POWER

Re-connect mains power.



CHECK VERSION

- Power up the PSU-XR.
- The firmware version will be displayed on the Standby/Status indicator when mains power is connected.

For example -

1 x red flash followed by 2 x green flashes followed by continuous red (standby) indicates V1.2.

2 x red flashes followed by continuous red (standby) indicates V2.0.

- Confirm that the updated firmware version is displayed as above.

