

XR AMPLIFIERS

When to update?

Cyrus i7-XR, i9-XR and Pre-XR amplifiers feature user-upgradable firmware via ports on the back panel.

Owners can check the Cyrus website for notification of updates or register their products to receive notification when updates are released.

Compatibility

The same firmware download is used for the i7-XR, i9-XR and Pre-XR models. The firmware can auto-detect the amplifier type and enable model specific features as required.

COMPUTERS AND OPERATING SYSTEMS

Cyrus firmware upgrades are possible using a PC computer. No special app is required, just basic file management skills to download, copy, rename and delete files.

The screenshots in the example are of a computer using Windows File Explorer under Windows 10 operating system. Other operating systems, computers and file management apps will appear differently although the steps in the upgrade procedure will be the same.

TOOLS REQUIRED

The amplifier will not require dismantling.

A mini USB cable (supplied) and the upgrade firmware will also be required.

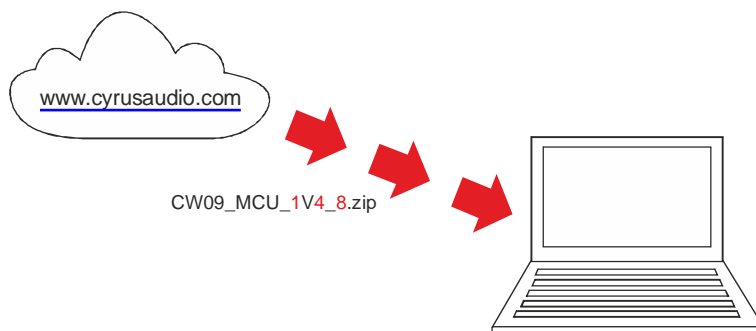
NOTE: Not all mini USB cables are data cables, some are charging cables. A charging cable is not suitable for firmware upgrades. Always use the cable supplied with the amplifier where possible.

DOWNLOAD

Download the firmware you require from the Cyrus website at www.cyrusaudio.com.

The firmware file name should be contained in a zip file in the format 'CW09_MCU_1v4_8.zip' where the red numbers in the example will change to indicate the firmware version. This 1v4_8 firmware version will be used through the rest of this example instruction sequence.

File name formats may change from time to time, but XR amplifier firmware will always be prefixed 'CW09' and will clearly include the version number.

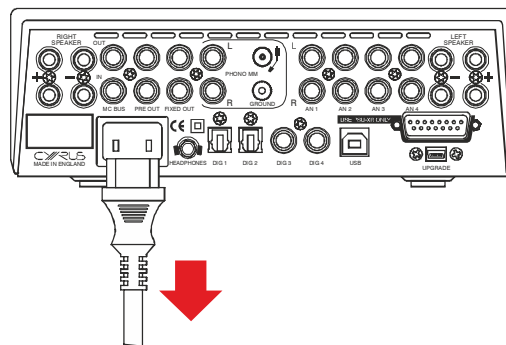


Important

The downloaded .zip file will need to be unzipped before you can perform the firmware update. Do NOT attempt to transfer the downloaded file to the amplifier. To unzip the file double click on the downloaded file, save the files to a location you are able to find from your explorer.

DISCONNECT

Disconnect mains power from the amplifier.



CONNECT

Connect the update cable to the computer.

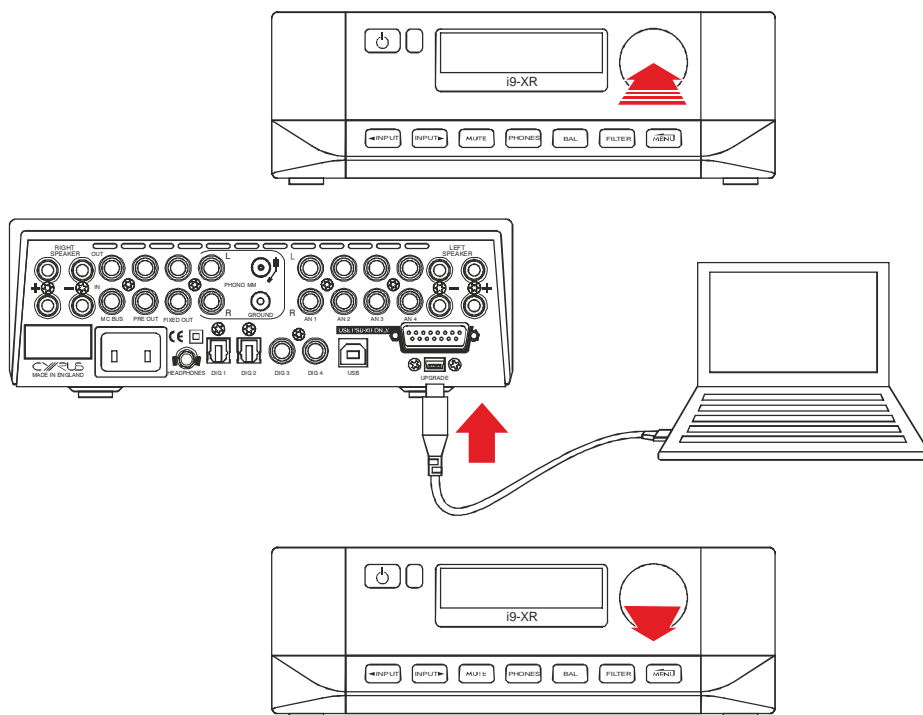
Press and hold the front panel rotary control.

While holding the rotary control, connect the mini-USB cable to the UPGRADE port on the back of the amplifier.

Release the rotary control.

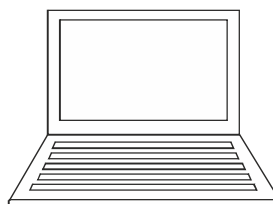
It is not necessary to connect mains power.

*The amplifier is now ready to update.
Don't operate the amplifier controls in any way during update.*



UPGRADE

Follow the instructions on the next page to update the firmware.



UNZIP

The firmware update file is packaged with these instructions in the 'zip' file download. Open the 'Firmware' folder within the zip file.

The firmware file name will be firmware.bin.

Extract the firmware file to the 'Downloads' folder.

Zip file

Update instructions

Change log

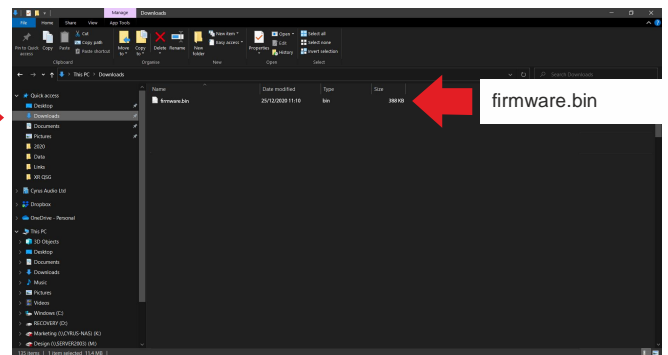
Firmware folder

firmware.bin

COPY

Select the 'firmware.bin' file in the Downloads folder and copy it (Ctrl+C).

DOWNLOADS →



DELETE ORIGINAL

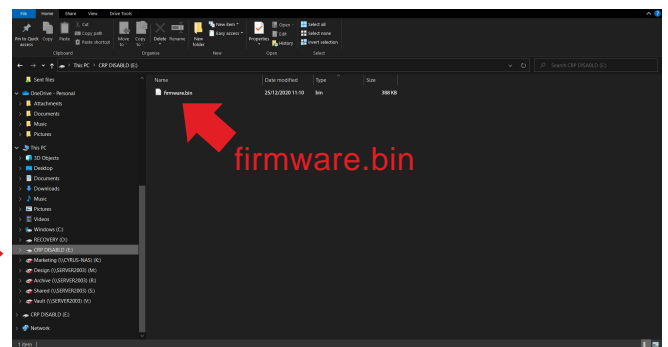
In a File Explorer window the amplifier should be visible as a drive titled 'CRP DISABLD'. On that drive should be a single file (the current firmware), titled 'firmware.bin'.

Locate and select the CRP DISABLD folder.

Press 'delete' to delete the firmware.bin file.



CRP DISABLD →



PASTE UPDATE

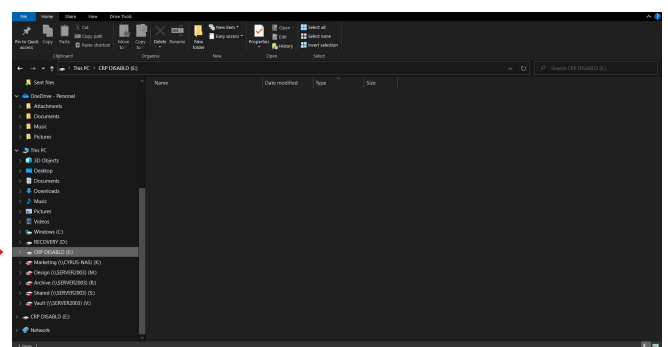
Select the CRP DISABLD folder.

Paste the new firmware into this folder (Ctrl+V).

You should see a progress bar as the file is copied.



CRP DISABLD →



DELETE DOWNLOAD

To avoid confusion in any future updates, it's good practice to delete the download before proceeding.

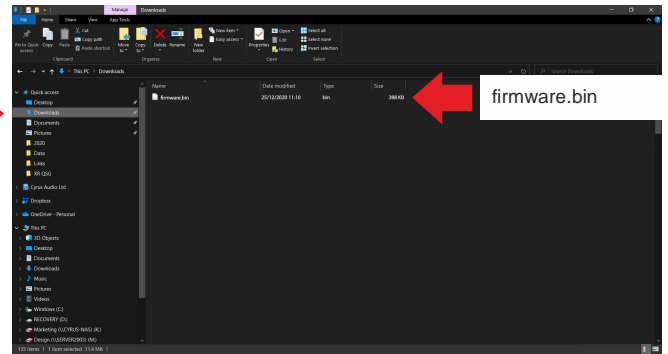
Return to the downloads folder.

Highlight the 'firmware.bin' file.

Press DELETE.

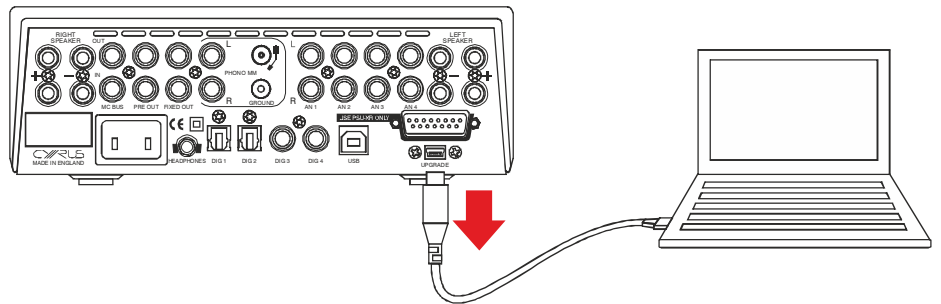
The firmware download will be deleted.

DOWNLOADS →



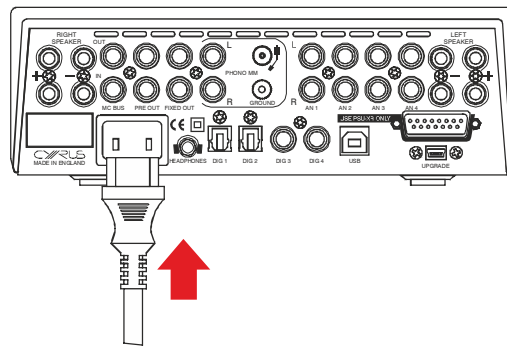
DISCONNECT

Disconnect the update cable.



CONNECT POWER

Re-connect mains power.



CHECK VERSION

Power up the amplifier.

Press 'i' on the remote control.

Confirm that the updated firmware version is listed on the display.

